

ARTIBRAINO

Applied Machine Intelligence





Company Overview

Artibraino Private Limited (ARTIBRAINNO) is a dynamic deep-tech start-up based in Bangalore, founded in 2019 with the aim of revolutionizing the world with cutting-edge technology. Our core focus is on developing innovative products, solutions, and services that leverage the power of machine intelligence and IoT to solve real-world problems and create tangible value for our clients.

As a recognized Start-up by DPIIT, Govt of India, incubated in the IoT Open lab by Software Technology Parks of India, we have access to world-class IoT lab, expandable office space, and mentoring from internationally renowned experts in industry and academia. Our expertise in IoT, machine learning, computer vision, natural language processing, and other emerging technologies allows us to constantly push the boundaries of what is possible and stay at the forefront of technological advancements.

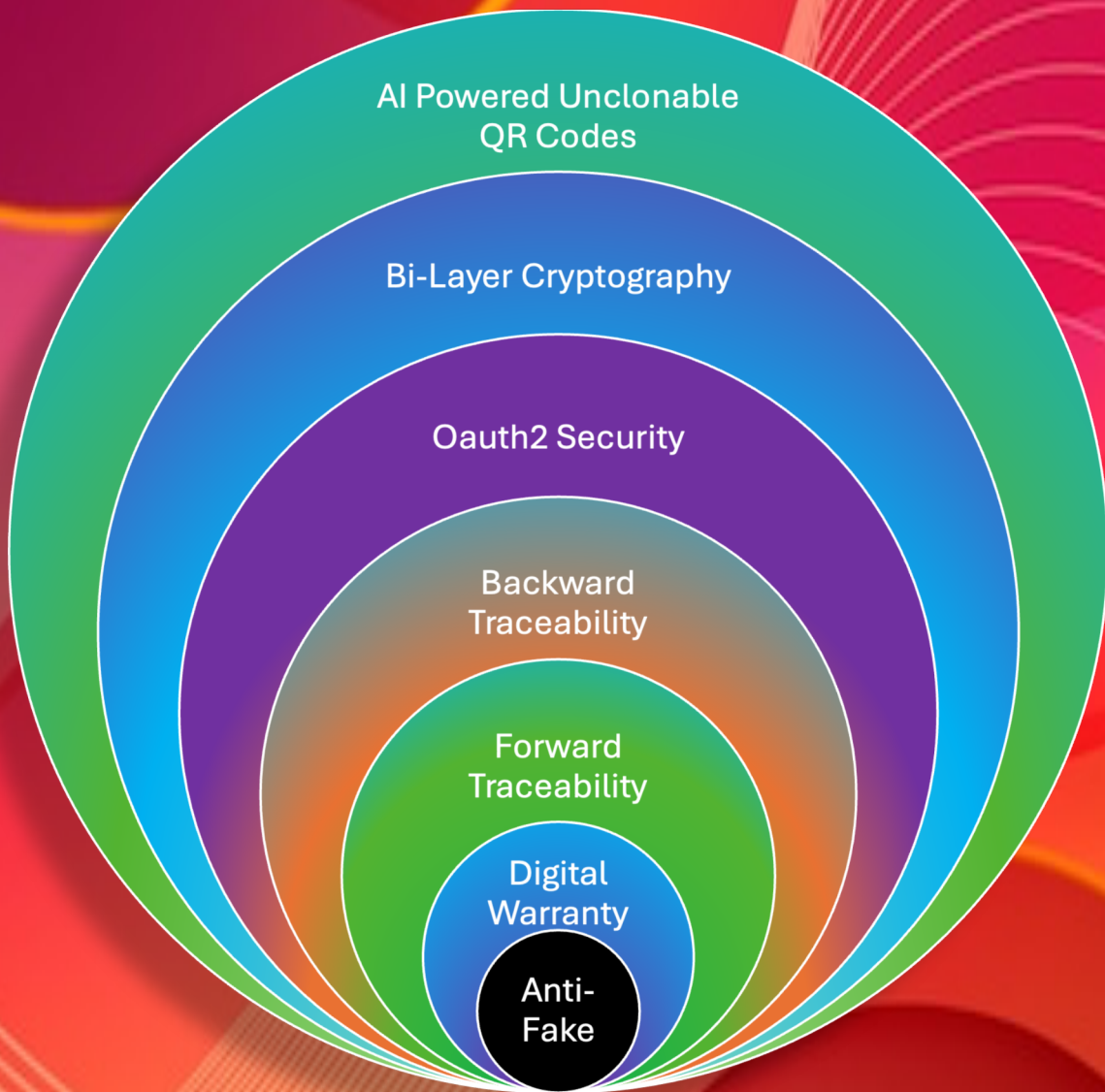
At Artibraino, we are committed to delivering game-changing solutions that help our customers stay ahead of the curve. Whether you are a start-up, an established enterprise, or a government agency, we can help you leverage the power of machine intelligence and IoT to solve your most pressing challenges. So, join us on our journey to transform the world with intelligent technology and unlock limitless potential for your business.



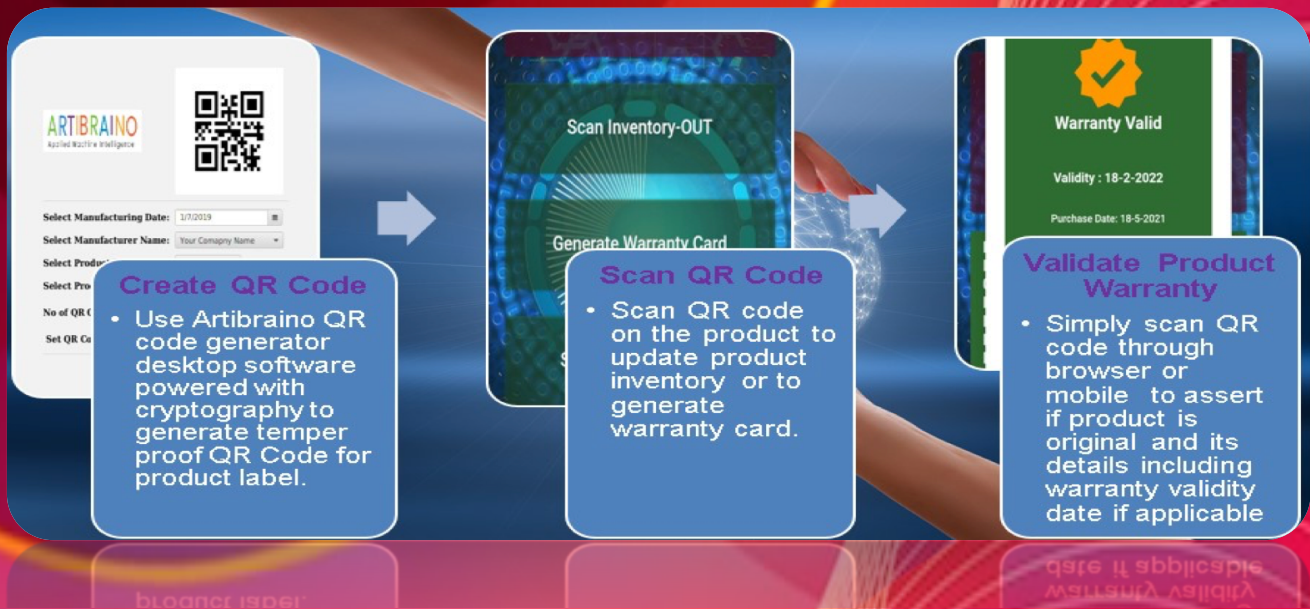
SingleTick

Advanced Digital Track & Trace with Precision Counterfeit Detection

Unleash the future of supply chain security with advanced digital tracking and unerring counterfeit detection

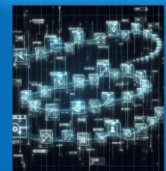


SingleTick is pioneering the future of secure, efficient, and intelligent supply chain solution. It combines cutting-edge technologies such as Artificial Intelligence and Cryptography to combat the proliferation of counterfeit products and ensure the transparency of goods throughout the supply chain. We believe in a world where authenticity, traceability, and efficiency are the cornerstones of a successful business.



SingleTick leverages patented technology to assign a unique digital fingerprint to every product within system. This digital fingerprint is akin to a product's birth certificate, containing immutable information about its origins, journey, and authenticity.

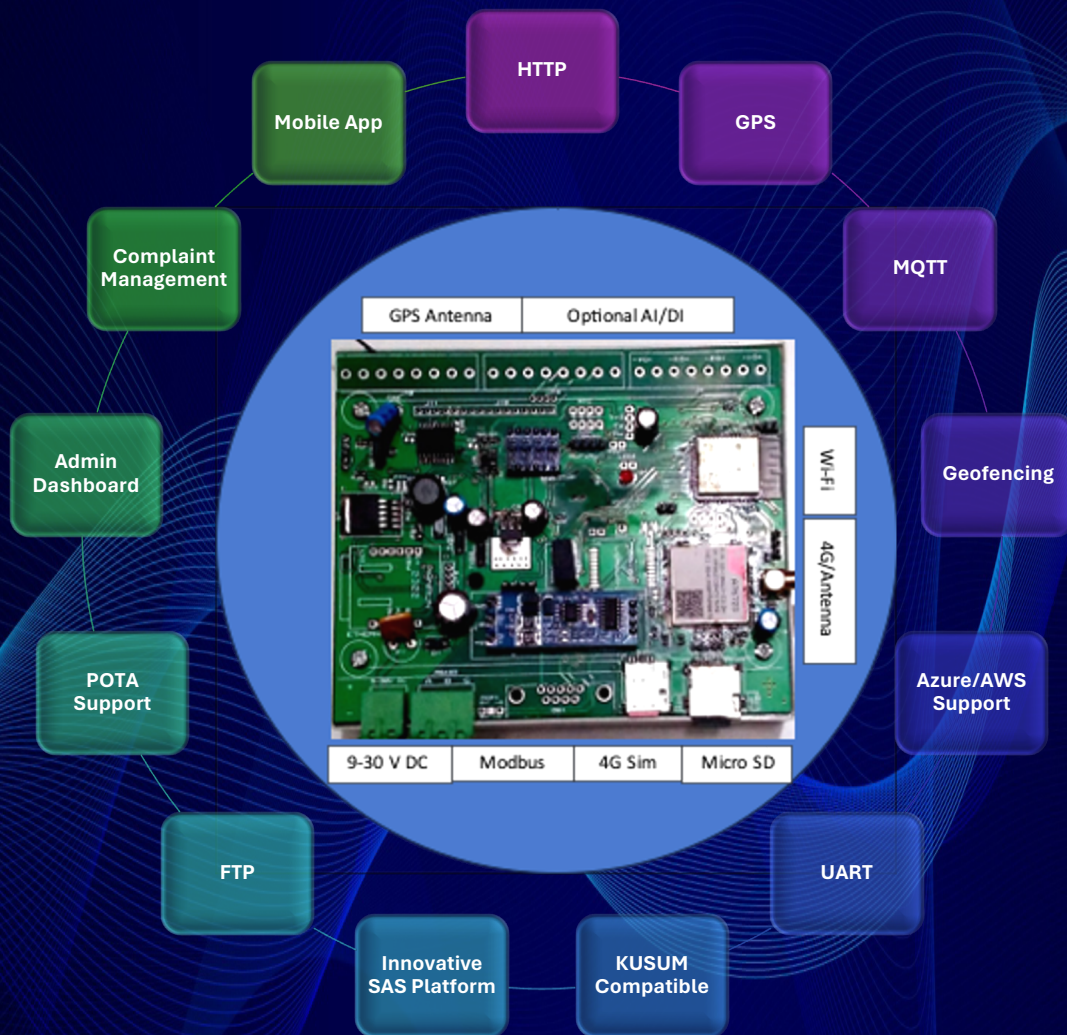
By meticulously recording and verifying each step in a product's journey, from its inception in production to its final destination on the retail shelf, Artibraino's system creates a tamper-proof digital trail.



A simple mobile scan instantly detects counterfeits anywhere in the supply chain. Protect your brand's reputation and verify authenticity effortlessly. Trust, transparency, and counterfeit detection—all with SingleTick.



Remote Monitoring System



- ◆ ESP32 32 bit Wi-Fi Controller
- ◆ SIMCOM A7672S 4G LTE Module
- ◆ Ethernet Module (Optional)
- ◆ Isolated RS485/RS232
- ◆ Micro SD Card
- ◆ Nano SIM slot

- ◆ Serial Port for programming
- ◆ On-board RTC
- ◆ 4 Digital Isolated Inputs
- ◆ 2 Digital Outputs
- ◆ FOTA (Firmware Update) support



Artibraino's Remote Monitoring System is an advanced solution crafted to optimize the efficiency, reliability, and overall performance of assets for various industrial applications. Whether you're overseeing a small-scale residential setup or managing extensive industrial facilities, our system offers real-time insights and control, ensuring seamless monitoring and operation of your all assets.



With high-performance 4G connectivity and GPS, enables reliable and high-speed data transmission, allowing the RMS to operate efficiently across diverse environments.

Troubleshoot issues remotely with our advanced diagnostic features, minimizing the necessity for on-site visits. Reducing operational costs and enhancing overall maintenance efficiency across your infrastructure.

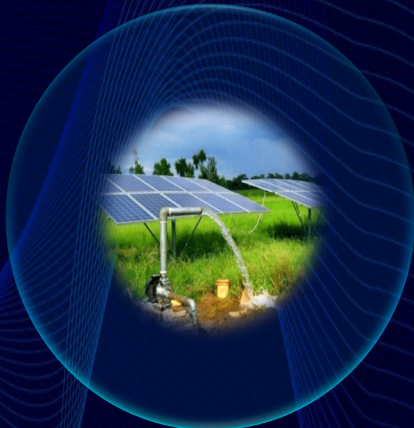


Attain immediate visibility into the performance metrics, of any industrial equipment in your system. RMS monitoring system furnishes real-time data, ensuring quick identification and resolution of any issues.



Some RMS Applications

Renewable Energy



Whether it's agricultural pump control, energy consumption monitoring, or optimizing inverters and combiner boxes, our platform seamlessly integrates into your existing infrastructure. This not only streamlines implementation but also enhances the efficiency and effectiveness of your operations. Aligned perfectly with the goals and requirements of the PM KUSUM project.

Manufacturing



In industrial manufacturing, our IoT system seamlessly integrates diverse environments, supporting Modbus and various connectivity options. This enables efficient data collection and precise control, automation and predictive maintenance. Advanced protocols enhance real-time decision-making for increased productivity.

Supply Chain

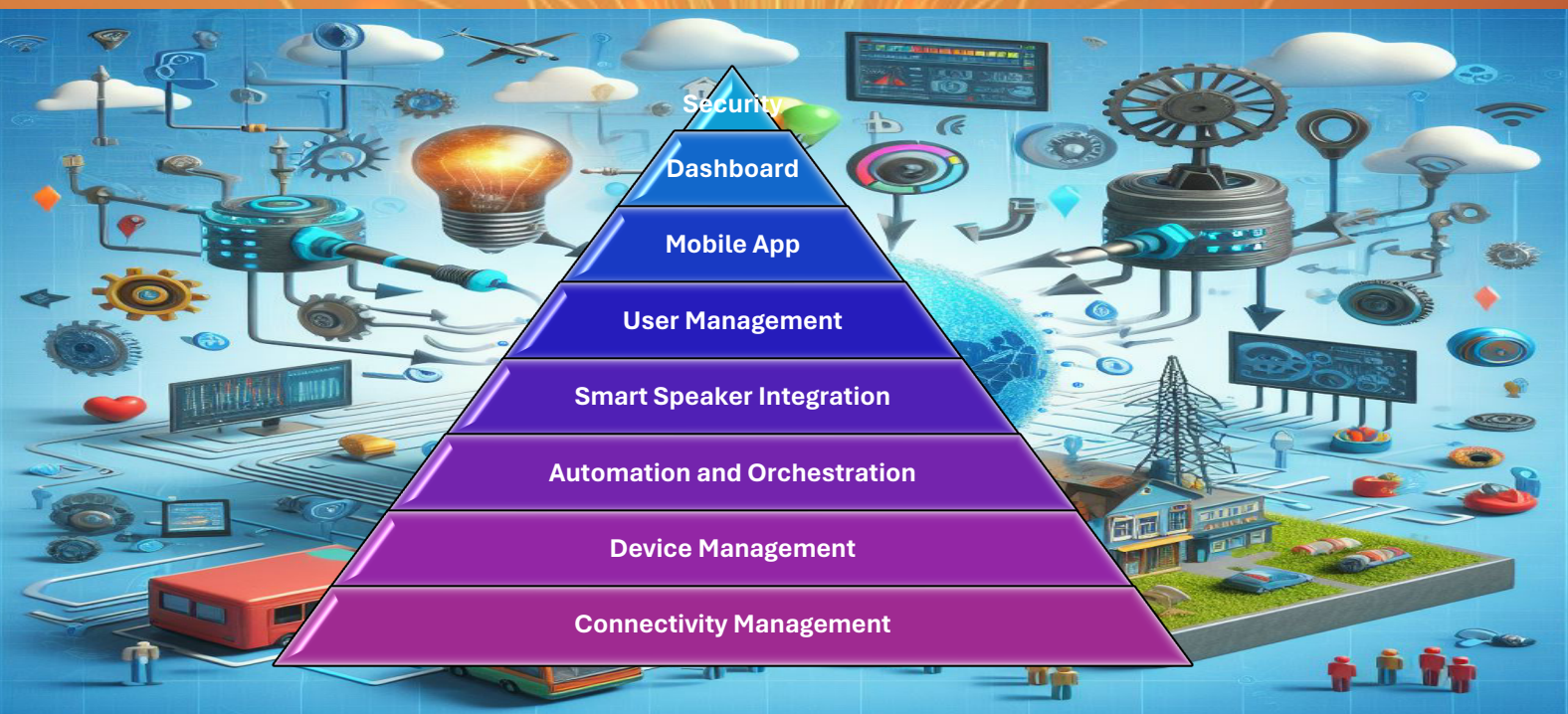


Our RMS revolutionizes Logistics and Supply Chain management by offering real-time tracking and advanced sensor support for safe transport. With seamless 4G connectivity, it ensures precise monitoring and control, guaranteeing optimal conditions and minimizing spoilage risk. Embrace precision and efficiency in your logistics operations with our cutting-edge IoT solution.



Things to the Internet of Things (T2IoT)

Artibraino's Things to the Internet of Things (T2IoT) offers a comprehensive IoT platform with a wide range of features to empower businesses in harnessing the full potential of the Internet of Things. From seamless device management and connectivity to robust data ingestion, processing, and analytics capabilities, T2IoT provides the essential tools for building and managing IoT solutions effectively. With advanced security measures, scalability, and integration capabilities, businesses can confidently deploy IoT applications, automate processes, and derive actionable insights from their IoT data.



T2IoT's intuitive dashboard and visualization tools further enhances monitoring and decision-making, with compliance to industry standards and support for customization through APIs and SDKs, T2IoT is the complete IoT solution for driving innovation and digital transformation across diverse industries.



Real-World Applications of T2IoT

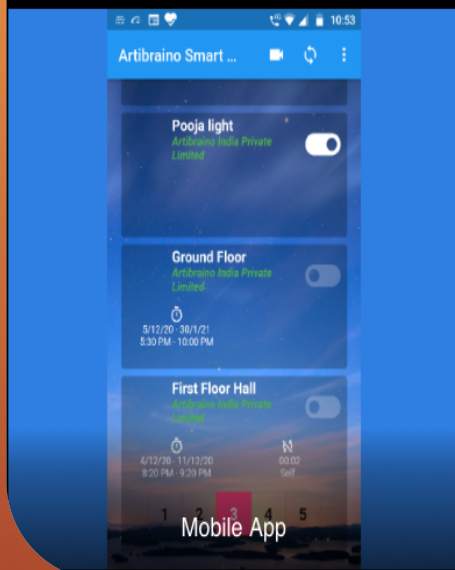


Protective Case



App Remote Control

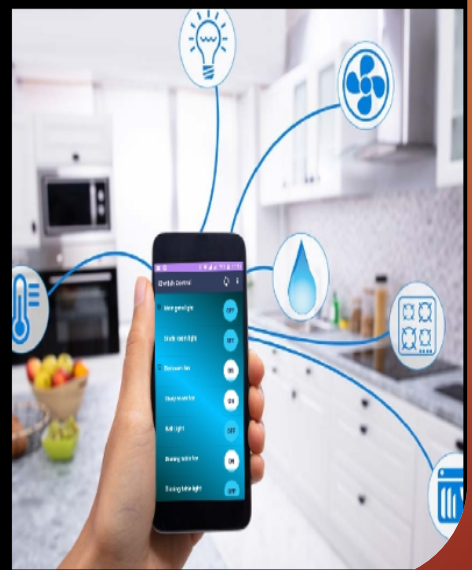
Just tap on Artibraino iSwitch App in your android phone or in Alexa app linked with your iSwitch account to control your lights and other appliances from anywhere. Let the lighted house welcome you on your arrival



Mobile App



Ordinary to smart





Services



AI Solutions Development



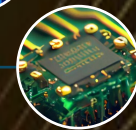
IoT Solutions Development



Digital Transformation



Data Analytics



Embedded Software Development

AI Solutions Development: Empower your organization with our AI solutions development expertise, harnessing advanced algorithms and machine learning techniques to unlock insights, automate processes, and drive intelligent decision-making.

IoT Solutions Development: Elevate your operations with our IoT solutions development, leveraging interconnected devices and data-driven insights to optimize efficiency, enable remote monitoring, and transform your business into a smarter, more connected ecosystem.

Digital Transformation: Transform your business with our digital transformation services, strategically integrating cutting-edge technologies to revolutionize processes, enhance customer experiences, and drive innovation across industries.

Data Analytics: Unlock the power of data with our comprehensive data analytics services, transforming raw information into actionable insights to drive informed decision-making, uncover trends, and capitalize on new opportunities.

Embedded Software Development: Drive innovation with our embedded software development solutions, designing and deploying customized firmware and software solutions to power your hardware devices, enhance functionality, and deliver seamless user experiences.



Founder

Kumar Sindhurakshit is a seasoned professional with a distinguished academic background, with a Postgraduate degree in Artificial Intelligence from Queen Mary University of London, renowned globally for its excellence in education and research. With over 25 years of robust experience, he has navigated the realms of senior management within prominent R&D organizations such as NCST/C-DAC and esteemed multinationals like Wipro, HP, Mahindra, and Starhome. Throughout his extensive career journey, he has been at the forefront of innovation, spearheading initiatives in R&D, product development, and services leadership. His contributions have not only shaped the trajectory of the organizations he has been a part of but have also left a lasting impact on the industries they operate in.

He has received specialized training in innovative product development at the prestigious Indian Institute of Science (IISc) in Bangalore, travelled extensively and collaborated on numerous projects in different countries, he possesses a wealth of experience in working with and leading distributed, cross-cultural teams and customers. His expertise extends across the entire spectrum of the software development life cycle, from conceptualization to deployment. His hands-on experience in leading teams through each phase of development equips him with invaluable insights into optimizing processes, mitigating risks, and delivering high-quality, innovative solutions.

www.artibraino.com

contact@artibraino.com



Artibraino Private Limited
6144, Tata New Haven
Off Tumkur Road, Dasanapura,
Bangalore, 562123, Karnataka
Phone: + 91 988 626 7311
Email: contact@artibraino.com
Web: www.artibraino.com

